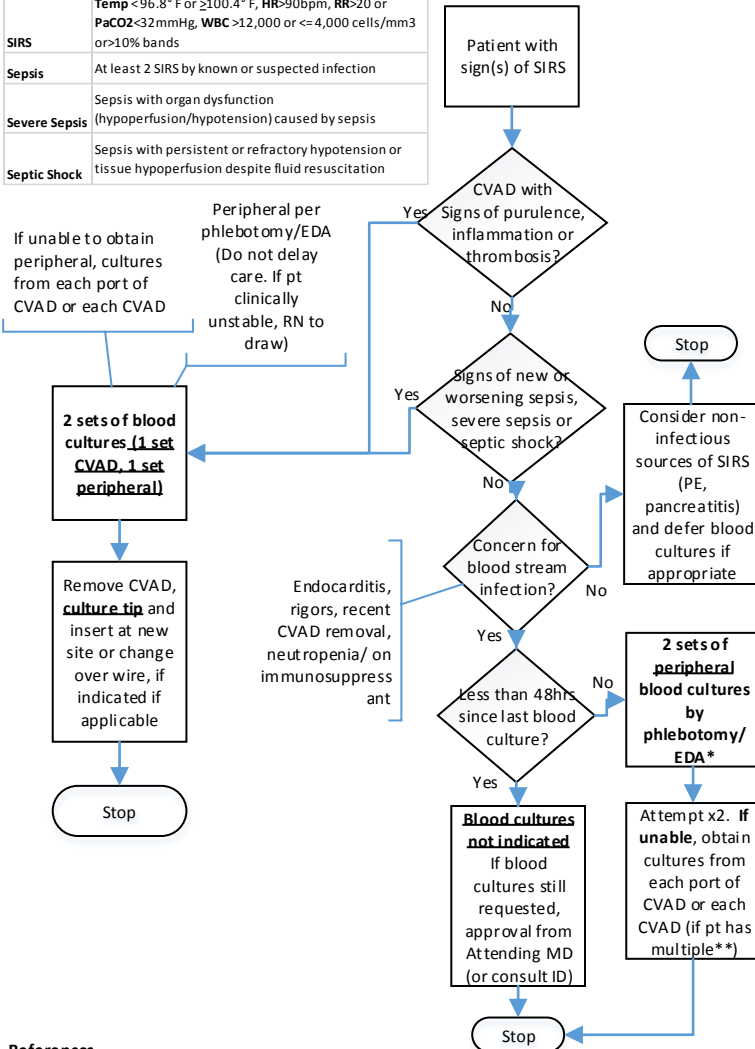


Blood Culture Algorithm- Patient with Central Venous Access Device

(3/2017)

SIRS	Temp <96.8° F or ≥100.4° F, HR>90bpm, RR>20 or PaCO2<32mmHg, WBC >12,000 or <= 4,000 cells/mm3 or >10% bands
Sepsis	At least 2 SIRS by known or suspected infection
Severe Sepsis	Sepsis with organ dysfunction (hypoperfusion/hypotension) caused by sepsis
Septic Shock	Sepsis with persistent or refractory hypotension or tissue hypoperfusion despite fluid resuscitation



References

- Naomi et al-Critical Care Med 2008 Vol.36 No.4 1330-1349
- Clin Infect Dis 2009;49:1-45

*If blood cultures neg and fevers continue without another source identified, remove CVAD, culture tip

**Page dialysis or plasmapheresis team for those specific CVAD draws