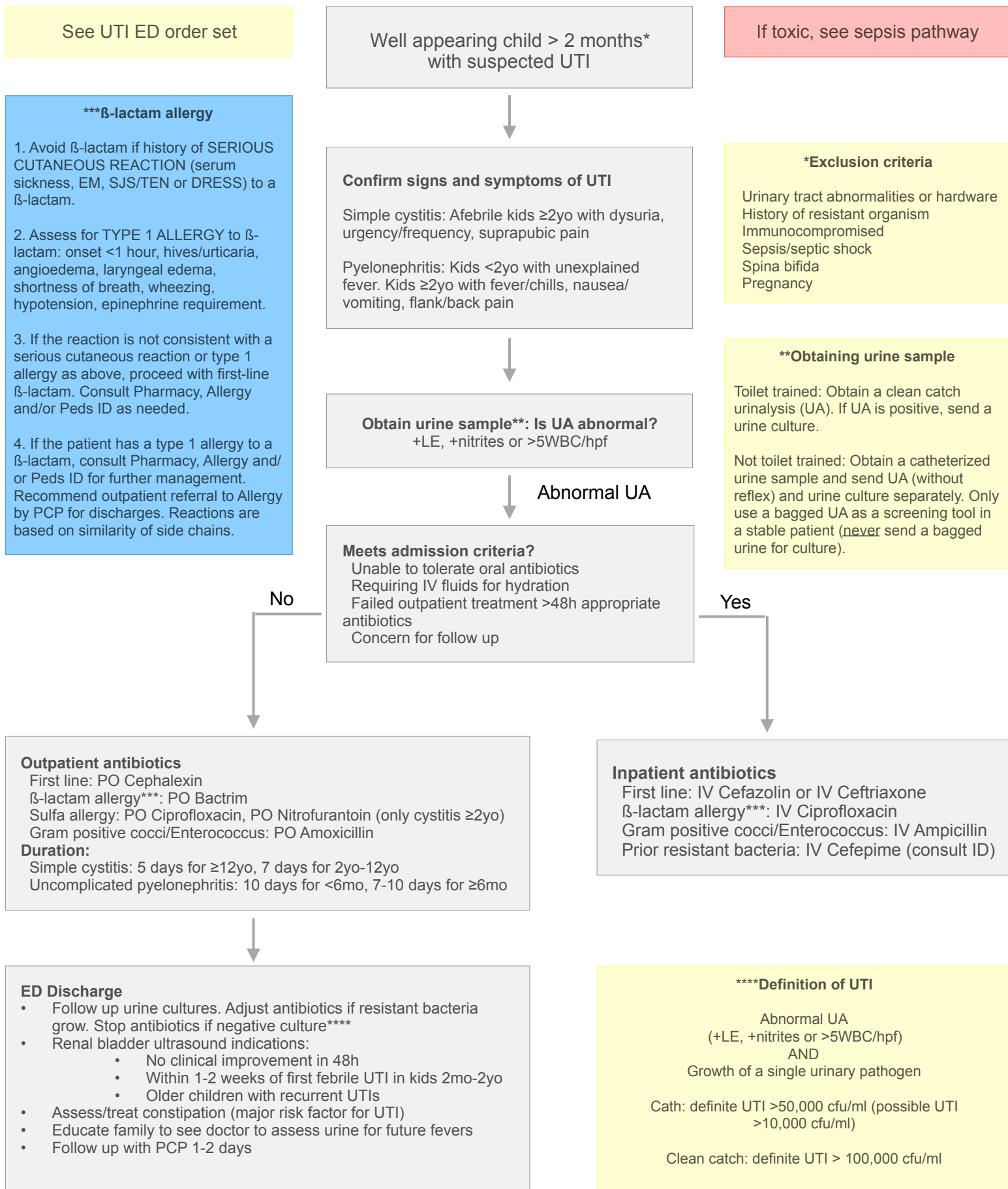


Emergency Department Clinical Pathway for Children with Urinary Tract Infection



Antibiotic Recommendations

	Outpatient (ED discharge or transition IV to PO)	Inpatient (ED admission)	Duration
UTI	<p>First line:</p> <p>PO Cephalexin 25 mg/kg/dose TID (max 500 mg/dose)</p> <p>Cephalosporin allergy:</p> <p>PO Bactrim 4 mg TMP/kg/dose BID (max 160 mg TMP/dose)</p> <p>Cephalosporin and Sulfa allergy:</p> <p>PO Nitrofurantoin (only ≥ 2yo with simple cystitis**, NOT pyelonephritis) suspension 25mg/5mL 7 to < 12 kg: 12.5mg Q6H 12 to < 22 kg: 25mg Q6H 22 to < 31 kg: 37.5 mg Q6H 31 to < 42 kg: 50 mg Q6H ≥ 42kg: 50 to 100mg Q6H</p> <p>> 12yo: PO Nitrofurantoin 100mg capsule BID</p> <p>PO Ciprofloxacin 10 mg/kg/dose BID (max 500 mg/dose) (suspension requires prior auth for outpatient use)</p> <p>Enterococcus/Gram positive cocci:</p> <p>PO Amoxicillin suspension 250mg/5mL 16 mg/kg/dose TID (max 500 mg/dose)</p>	<p>First line: (AAP's Better Antibiotic Selection in Children recommends IV Cefazolin for <i>E. coli</i> susceptibility ≥80% in urine)</p> <p>IV Cefazolin 25 mg/kg/dose Q8H (max dose 1000 mg)</p> <p>IV Ceftriaxone 50 mg/kg/dose Q24H (max dose 2000 mg)</p> <p>Cephalosporin allergy:</p> <p>IV Ciprofloxacin 10 mg/kg/dose Q8-12H (max dose 400 mg)(consult ID)</p> <p>Enterococcus/Gram positive cocci:</p> <p>IV Ampicillin 200 mg/kg/day divided Q6H (max 8 g/day)</p> <p>History of resistant organisms:</p> <p>IV Cefepime (consult ID before ordering)</p>	<p>Simple cystitis*</p> <p>≥ 2yo-12yo: 7 days ≥ 12yo: 5 days</p> <p>Uncomplicated pyelonephritis** (previously healthy)</p> <p>< 6mo: 10 days ≥ 6mo: 7-10 days</p> <p>Complicated pyelonephritis (GU anomalies)</p> <p>Consult ID (10-14 days)</p>

*Simple cystitis: Kids ≥2yo with lower urinary tract symptoms (afebrile, dysuria, urgency/frequency, suprapubic pain).

**AAP's Better Antibiotic Selection in Children recommends no more than 10 days.

E. coli susceptibility

	CDH 2020** (urine/blood)	HH 2020** (urine)	AHH 2020** (urine)	NCH 2019* (urine)	NLFH 2020** (urine)	LCH 2020* (urine)
Cefazolin	92	82	86	98	81	72
Ceftriaxone	99	88	91	100	86	92
TMP-SMX	79	78	78	72	67	71
Ciprofloxacin	85	75	83	95	72	89
Nitrofurantoin	99 (urine only)	97	98	98	95	97

Abbreviations: AHH = Adventist Hinsdale Hospital, CDH = Northwestern Medicine Central DuPage Hospital, HH = Northwestern Medicine Huntley Hospital (includes Woodstock and McHenry), LCH = Lurie Children's Hospital, NCH = Northwest Community Healthcare, NLFH = Northwestern Medicine Lake Forest Hospital

*pediatric antibiogram **pediatric-adult antibiogram

Literature

1. Becknell B, Schober M, Korbel L, Spencer JD. The diagnosis, evaluation and treatment of acute and recurrent pediatric urinary tract infections. *Expert Rev Anti Infect Ther.* 2015;13(1):81-90. doi:10.1586/14787210.2015.986097
2. Brady PW, Conway PH, Goudie A. Length of intravenous antibiotic therapy and treatment failure in infants with urinary tract infections. *Pediatrics.* 2010;126(2):196-203. doi:10.1542/peds.2009-2948
3. Conway PH, Keren R. Factors associated with variability in outcomes for children hospitalized with urinary tract infection. *J Pediatr.* 2009;154(6):789-796. doi:10.1016/j.jpeds.2009.01.010
4. Copp HL, Shapiro DJ, Hersh AL. National ambulatory antibiotic prescribing patterns for pediatric urinary tract infection, 1998-2007. *Pediatrics.* 2011;127(6):1027-1033. doi:10.1542/peds.2010-3465
5. Gupta K, Hooton TM, Roberts PL, Stamm WE. Short-course nitrofurantoin for the treatment of acute uncomplicated cystitis in women. *Arch Intern Med.* 2007;167(20):2207
6. Jerardi KE, Auger KA, Shah SS et al. Discordant antibiotic therapy and length of stay in children hospitalized for urinary tract infection. *J Hosp Med.* 2012;7(8):622-627. doi:10.1002/jhm.1960
7. Kavatha D, Giamarellou H, Alexiou Z et al. Cefpodoxime-Proxetil versus Trimethoprim-Sulfamethoxazole for Short-Term Therapy of Uncomplicated Acute Cystitis in Women. *Antimicrob Agents Chemother.* 2003;47(3):897
8. Keren R, Chan E. A meta-analysis of randomized, controlled trials comparing short- and long-course antibiotic therapy for urinary tract infections in children. *Pediatrics.* 2002;109(5):E70-0. doi:10.1542/peds.109.5.e70
9. McMullen JA, Mahant S, DeGroot JM, Stephens D, Parkin PC. Predictors of long length of stay in infants hospitalized with urinary tract infection. *Hosp Pediatr.* 2014;4(5):291-297. doi:10.1542/hpeds.2014-0020
10. Michael M, Hodson EM, Craig JC, Martin S, Moyer VA. Short versus standard duration oral antibiotic therapy for acute urinary tract infection in children. *Cochrane Database Syst Rev.* 2003;(1):CD003966. doi: 10.1002/14651858.CD003966. PMID: 12535494.
11. Poole NM, Kronman MP, Rutman L, et al. Improving Antibiotic Prescribing for Children With Urinary Tract Infection in Emergency and Urgent Care Settings. *Pediatr Emerg Care.* 2020;36(6):e332-e339. doi:10.1097/PEC.0000000000001342
12. Saperston KN, Shapiro DJ, Hersh AL, Copp HL. A comparison of inpatient versus outpatient resistance patterns of pediatric urinary tract infection. *J Urol.* 2014;191(5 Suppl):1608-1613. doi:10.1016/j.juro.2013.10.064
13. Schroeder AR, Shen MW, Biondi EA, et al. Bacteraemic urinary tract infection: management and outcomes in young infants. *Arch Dis Child.* 2016;101(2):125-130. doi:10.1136/archdischild-2014-307997
14. Strohmeier Y, Hodson EM, Willis NS, Webster AC, Craig JC. Antibiotics for acute pyelonephritis in children. *Cochrane Database Syst Rev.* 2014;(7):CD003772. Published 2014 Jul 28. doi:10.1002/14651858.CD003772.pub4
15. Subcommittee on Urinary Tract Infection, Steering Committee on Quality Improvement and Management, Roberts KB. Urinary tract infection: clinical practice guideline for the diagnosis and management of the initial UTI in febrile infants and children 2 to 24 months. *Pediatrics.* 2011;128(3):595-610.
16. SUBCOMMITTEE ON URINARY TRACT INFECTION. Reaffirmation of AAP Clinical Practice Guideline: The Diagnosis and Management of the Initial Urinary Tract Infection in Febrile Infants and Young Children 2-24 Months of Age. *Pediatrics.* 2016;138(6):e20163026.